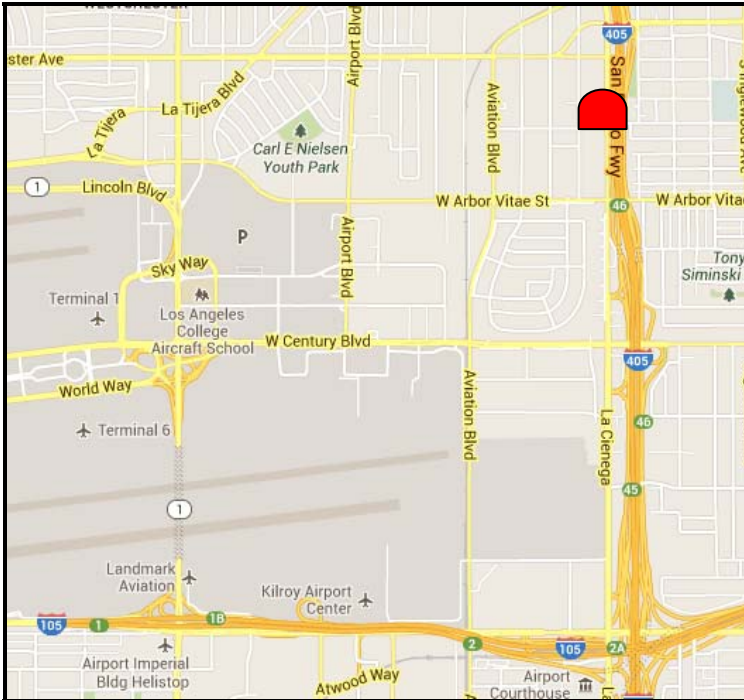


~ SPECTACULAR BILLBOARD • PRIME LOCATION ~

## 405 San Diego Fwy near LAX - Between Century & Manchester



**Location:** 405 San Diego Freeway / La Cienega Blvd.  
South of Manchester Blvd. (@ Hillcrest Blvd.)  
West side

**Size:** 24'4" h X 34'8" w

**DEC (est.):** 225,000 per day (nearly 7 million per month)

**Face:** South, viewed by Northbound traffic on the 405 Fwy  
AND Northbound traffic on La Cienega Blvd.

**Illuminated:** Yes

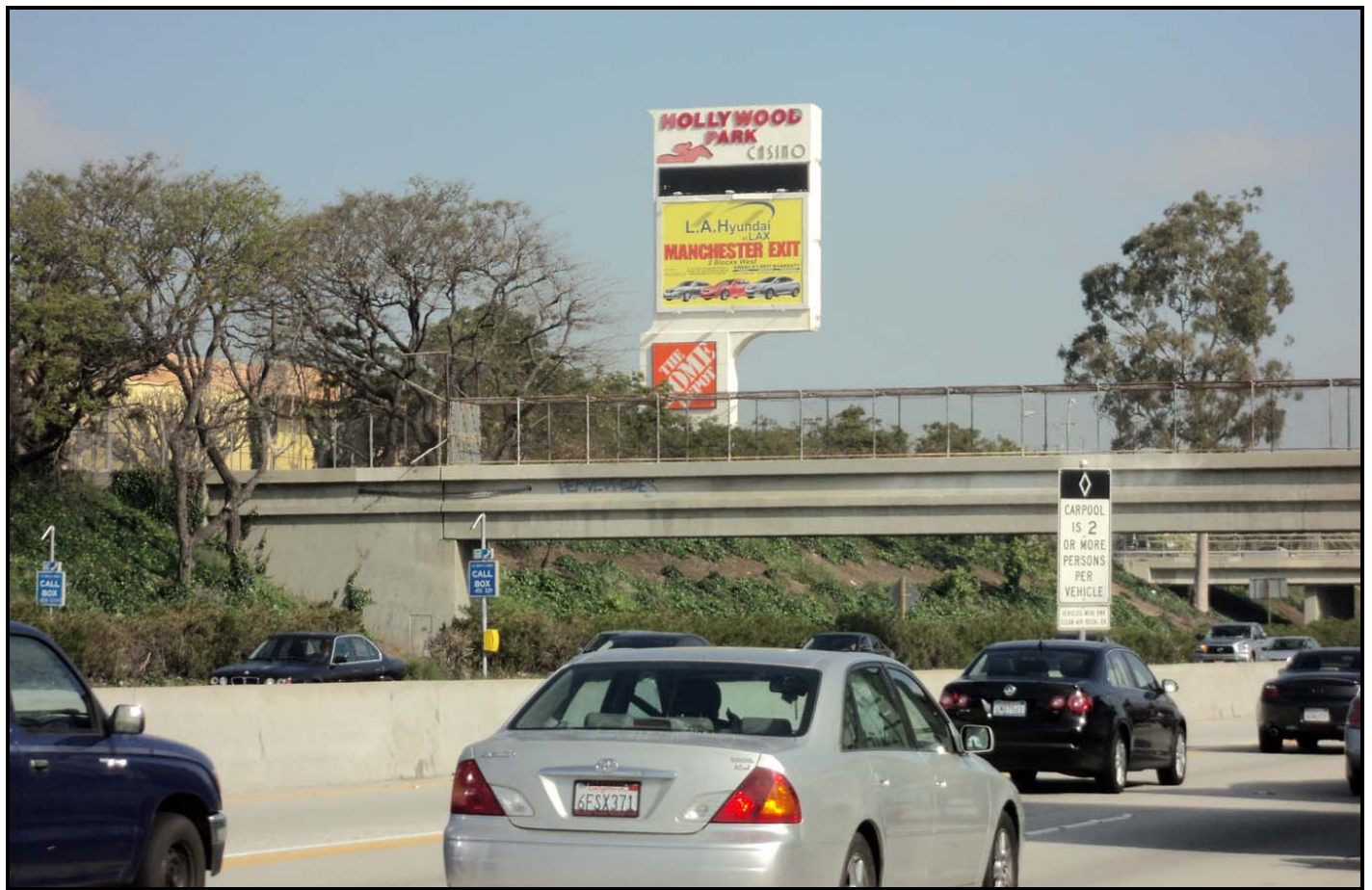
**Unit #:** A1-9027S

**Comments:** This eye-catching spectacular billboard is located near LAX (Los Angeles Int'l Airport) on the 405 fwy, L.A.'s most desired freeway by advertisers as well as the busiest and most congested freeway in the U.S.!

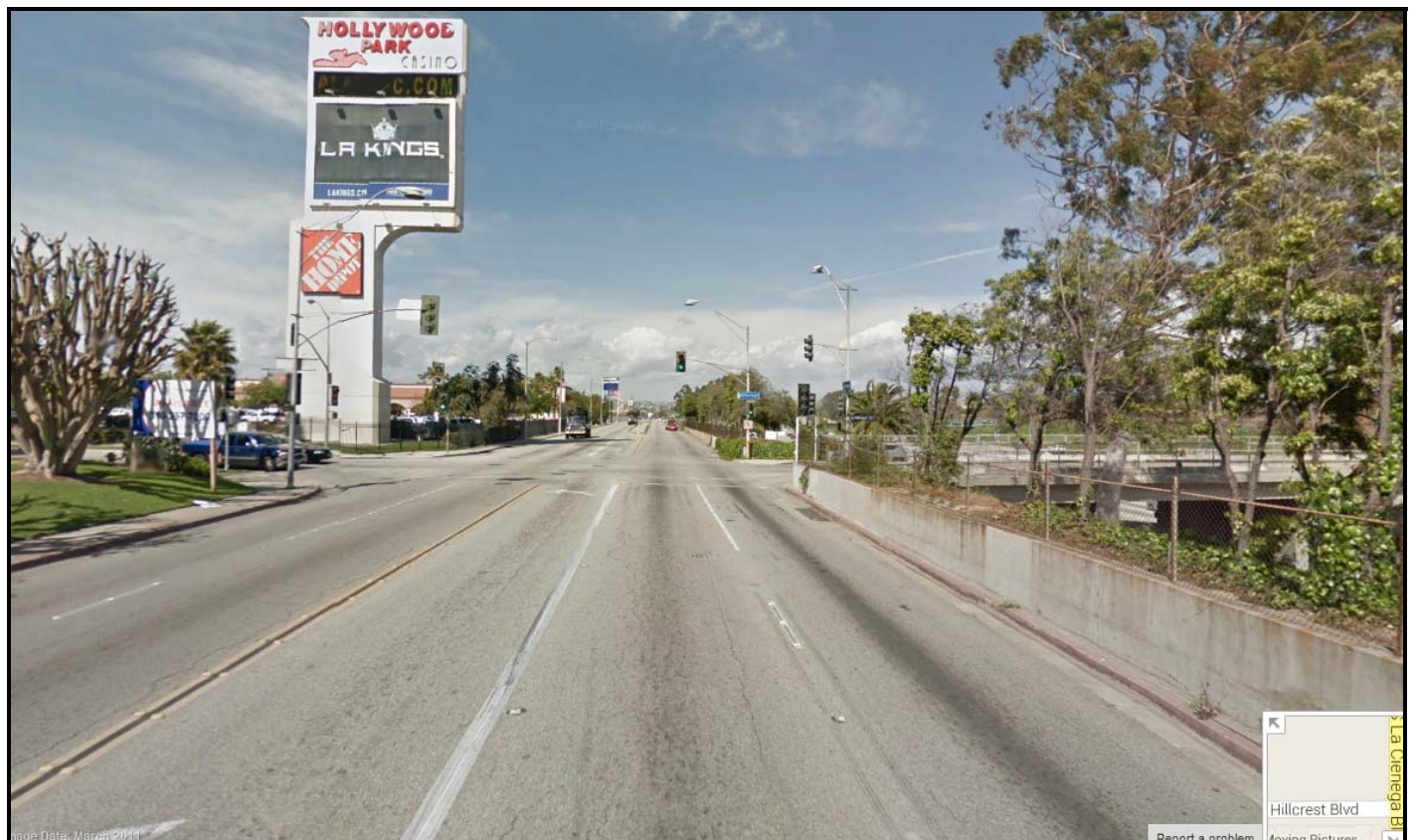
- Massive traffic count (225,000+ adult impressions per day)
- Long read with a near head-on approach in an area often slowed by heavy traffic
- Great visibility from both the freeway and La Cienega Blvd
- Huge ad space (844 sq. ft.), more than 25% larger than a standard full-size 14'x48' bulletin billboard (672 sq. ft.)
- Shows to drivers heading north towards L.A.'s upscale and affluent Westside and the San Fernando Valley





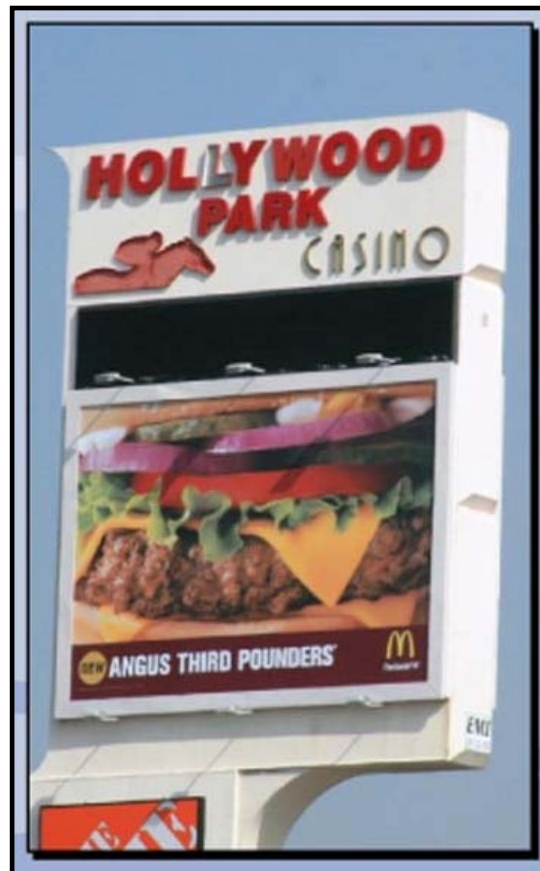


The above image is the view seen from northbound traffic on the 405 San Diego Freeway.



The above image is the view seen from northbound traffic on La Cienega Blvd.

Billboard Connection - (310) 429-3900 - [www.AdvertiseOnBillboards.com](http://www.AdvertiseOnBillboards.com)



Note: The small digital text display underneath the words “Hollywood Park Casino” at the top of the sign is utilized by Hollywood Park Casino and is not included with this ad space. However, when the digital display is in use, the changing messages attract the eye and draw attention to the entire sign, including the large static ad space directly underneath the digital sign area.